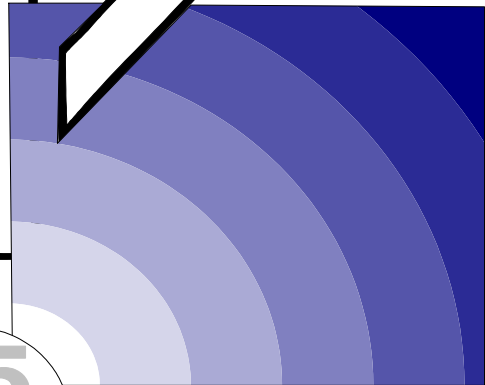
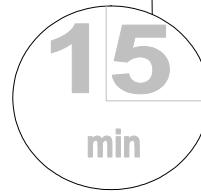


CLIP

15 minute Worksheet



Helping the patient with reduced hydration and nutrition

5: Thinking about swallowing problems

Intermediate level

Produced by
**Coleman Education
 Centre**
St. Oswald's Hospice
 Regent Avenue
 Gosforth
 Newcastle-upon-Tyne
 NE3 1EE

Tel: 0191 285 0063
 Fax: 0191 284 8004

This version written and edited
 by:

Claud Regnard
 Consultant in Palliative Medicine
 St. Oswald's Hospice, Newcastle
 Hospitals NHS Trust and
 Northgate&Prudhoe NHS Trust

Dorothy Matthews
 Senior Nurse
Lynn Gibson
 Senior physiotherapist
 Northgate Hospital Learning
 Disability Palliative Care Team

Sue Clark
 Head Speech & language
 Therapist,
 Royal Victoria Infirmary,
 Newcastle upon Tyne.

Development of this worksheet was
 supported by
**the NHS Executive
 BEACON initiative**

Northgate Palliative Care Team
 NHS Beacon site

Aim of this worksheet

To consider the causes and approaches to swallowing problems in advanced disease.

How to use this worksheet

- You can work through this worksheet by yourself, or with a tutor.
- Read the case study below, then work on the questions overleaf.
- The work page is on the right side, the information page is on the left.
- Work any way you want: you can try answering from your own knowledge (in which case fold over the information page), you can use the information page (this is not cheating- you learn as you find the information), or you can use other sources of information
- It should take you about 15 minutes. If anything is unclear, discuss it with a colleague.
- If you think any information is wrong or out of date let us know
- Use the activity on the back page and take this learning into your workplace.

Case study

Ben is a 33 year old man who has a moderate learning disability together with hydrocephalus spastic diplegia, visual impairment and epilepsy. He is diagnosed as having a carcinoma of kidney with lung metastases. Ben is usually well nourished, but in three months he has lost 11kg weight. He has always found eating and drinking difficult but now coughs and splutters when drinking. He has had three chest infections in as many weeks

Causes of difficulty swallowing (dysphagia)

Mucosal problems: dryness from any cause can make swallowing very difficult. If the mucosa is damaged, pain will make it difficult to swallow. Causes of mucosal damages are infection (eg. candida, herpes, aphthous ulcers), local cancer causing pain, cancer treatment (chemotherapy or radiotherapy involving the mouth, pharynx or oesophagus). Drugs can affect swallowing by causing dryness (eg. amitriptyline, morphine, cyclizine), or causing ulceration (eg. NSAIDs).

Neurological problems: both sensation and muscular control are essential for effective swallowing. Any cause of nerve damage (eg. cancer, surgery) will cause problems with sensation or muscle control. Damage to the cortex of the brain (eg. dementia, stroke) or to the cerebellum (eg. cancer) can cause problems with co-ordination of the swallowing muscles. Some conditions cause degeneration of the connecting nerve cells that control muscles (motor neurones) eg. motor neurone disease.

Muscular problems: nearly 40 muscles are involved in swallowing and each must co-ordinate correctly with its neighbour for swallowing to occur correctly. Any of the neurological problems above may cause problems. In addition, surgical removal of muscle, or scarring of muscle (due to surgery or radiotherapy) can cause difficulties.

Blockages: these mainly affect the oesophagus and can be caused by cancer, scarring, or inflammation due to infection.

Signs and symptoms of dysphagia*General features:*

Signs: dehydration and weight loss are the most likely signs. The total time taken from the first movement of the tongue to the last movement of the larynx (the oro-pharyngeal transit time) is usually less than 1 second with liquids- times longer than this are abnormal. Patients will usually refuse all food if the transit time is longer than 10 seconds.

Symptoms: food refusal and pain on eating may indicate a problem with swallowing. Repeated chest infections can occur if food or fluid is getting into the lungs (aspiration). Patients can sense accurately the position of an obstruction and this information is important in separating out swallowing causes in the mouth and pharynx from those in the oesophagus.

Preparation (oral) phase problems:

Signs: leakage of food or liquid from the mouth, food collecting between the gums and the cheek, reduced or poorly co-ordinated tongue movements preventing food from forming a bolus and moving food from the front to the back of the mouth, prolonged chewing due to pain in the mouth, reduced sensation or muscular weakness.

Symptoms: difficulty moving food or liquids to the back of the tongue or pain in the mouth on chewing.

Swallowing and pharyngeal phase problems:

Signs: delayed swallowing phase, choking and coughing before, during or after the swallow, 'gurgly' quality to the voice after drinking due to material entering the larynx, nasal regurgitation or copious sputum.

Symptoms: a sensation of food 'sticking' at the mouth or throat, feeling of choking or pain in the throat on swallowing.

Oesophageal phase problems:

Signs: usually non unless aspiration is causing repeated chest infections.

Symptoms: sensation of food sticking in the chest or abdomen that is worse with solid food (the level of the sensation invariably matches the site of the blockage), pain on swallowing or heartburn due to reflux of stomach contents into the oesophagus.

Helping Ben

Gather information: check for all the signs and symptoms above. Monitor food and drink intake.

Think about the Ben's need for hydration and feeding: see CliP worksheet on *Decisions in Hydration and Feeding*

Ensure that any infection or pain is treated: eg. candida. See CliP worksheet on *Oral Problems*

Ask for help: if you suspect a swallowing problem then which person is needed depends on where the problem lies:

Mouth or pharynx: these patients should be seen by a swallowing therapist. These are speech therapists with a special interest in swallowing. After an initial assessment they may arrange for investigations of swallowing which help to formulate solutions to make swallowing easier, as well as advice on whether it is safe to continue with oral feeding and drinking.

Oesophagus: these need referral to a gastroenterologist who may organise a barium or gastrograffin swallow as well as a look with a flexible viewing tube (an endoscope). If there is an obstruction they may be able to treat this by dilatation, laser or inserting a stent to keep the oesophageal passage open.

If the assessments show that Ben needs extra hydration and food given then it may be necessary to consider a non-oral route- see the CliP worksheet on *Using Non-oral Routes*.

Simple help: thickened liquids and foods (mousse, creamed soup) can often be swallowed more easily. Swallowing with the head tilted forward can reduce aspiration.

There are four stages of swallowing:

- Preparation phase: chewing and moving the food and liquid backwards
- Swallowing: moving the contents over the back of the tongue into the pharynx
- Pharyngeal: moving the contents towards the opening of the gullet (oesophagus)
- Oesophageal: moving contents down through the oesophagus to the stomach

Reflect

**What could affect Ben's swallowing?
Think about causes in the following categories:**

Problems with the lining (mucosa):

Neurological (nerve and brain) problems:

Muscle problems:

Blockages:

Write

Write down the signs (changes you can feel or see) and symptoms (problems the patient complains of) when swallowing is affected

	Signs you can feel or see	Symptoms patient complains of
General features		
Preparation phase		
Swallowing and pharyngeal phase		
Oesophageal phase		

Reflect

Think about what you can do to help Ben

FURTHER ACTIVITY: Thinking about swallowing problems

- If one of your clients was experiencing problems with swallowing.
What would you do?
Who would you contact?

FURTHER READING : Thinking about swallowing problems

Journal articles

- Dwolatzky T, Berezovski S, Friedmann R, Paz J, Clarfield AM, Stessman J, Hamburger R, Jaul E, Friedlander Y, Rosin A, Sonnenblick M. A prospective comparison of the use of nasogastric and percutaneous endoscopic gastrostomy tubes for long-term enteral feeding in older people. *Clinical Nutrition*. 2001; **20**(6):535-40.
- Fuh JL, Lee RC, Lin CH, Wang SJ, Chiang JH, Liu HC. Swallowing difficulty in Parkinson's disease. *Clinical Neurology and Neurosurgery*, 1997; **99**: 106-12.
- Groher M.E. Determination of the risks and benefits of oral feeding *Dysphagia* 1994; **9**: 233-234.
- Lazarus CL. Management of swallowing disorders in head and neck cancer patients: optimal patterns of care. *Seminars in Speech & Language* 2000; **21**(4): 293-309.
- Leslie P, Carding PN, Wilson JA. Investigation and management of chronic dysphagia. *British Medical Journal*, 2003; **326**: 433-6.
- Magnus V. Dysphagia training for nurses in an acute hospital setting- a pragmatic approach. *International Journal of Language and Communication Disorders*, 2001; **36**(Suppl): 375-8.
- McHorney CA, Bricker DE, Kramer AE, Rosenbek JC, Robbins J, Chignell KA, Logemann JA, Clarke C. The SWAL-QOL outcomes tool for oropharyngeal dysphagia in adults: I. Conceptual foundation and item development. *Dysphagia*, 2000; **15**: 115-21.
- McHorney CA, Bricker DE, Robbins J, Kramer AE, Rosenbek JC, Chignell KA. The SWAL-QOL outcomes tool for oropharyngeal dysphagia in adults: II. Item reduction and preliminary scaling. *Dysphagia*, 2000; **15**: 134-5.
- North G et al *Dysphagia*. A guide for people who are having difficulties eating and drinking. Chesterfield, North Derbyshire Community Health Trust, 1996
- Park RHR, Allison MC, Lang J et al Randomised comparison of percutaneous gastrostomy and nasogastric tube feeding in patients with persisting neurological dysphagia. *British Medical Journal* 1992; **304**: 1406 - 1409.
- Regnard CFB. Dysphagia, dyspepsia and hiccups. In, *Oxford Textbook of Palliative Medicine 3rd ed*. Doyle D, Hanks G, Cherny NI, Calman K eds. Oxford : Oxford University Press, 2003.
- Scott AG, Austin HE. Nasogastric feeding in the management of severe dysphagia in motor neurone disease. *Palliative Medicine* 1994; **8**: 45 - 49.
- Thomas FJ, Wiles CM. Dysphagia and nutritional status in multiple sclerosis. *Journal of Neurology*, 1999, **246**: 677-82.
- Thomas FJ, Wiles CM. Dysphagia and nutritional status in multiple sclerosis. *Journal of Neurology*, 1999, **246**: 677-82.
- Wasson K, Tate H, Hayes C. Food refusal and dysphagia in older people with dementia: ethical and practical issues. *International Journal of Palliative Nursing*. 2001; **7**(10):465-71.

Book resources

- Working with swallowing disorders*. Langley J. Bicester: Winslow Publications 1994.
- Evaluation and Treatment of Swallowing Disorders*. Logemann JA. San Diego: College Hill Press, 1983.

CLIP

Current Learning In Palliative care
An accessible learning programme for health care professionals

Fifty seven 15 minute worksheets are available on:

- An introduction to palliative care (3 worksheets)
- Helping the patient with pain (9 worksheets)
- Helping the patient with symptoms other than pain (11 worksheets)
- Moving the ill patient (2 worksheets)
- Psychological needs (8 worksheets)
- Helping patients with reduced hydration and nutrition (8 worksheets)
- Procedures in palliative care (4 worksheets)
- Understanding and helping the person with alternative communication (learning disabilities) (5 worksheets)
- The last hours and days (4 worksheets)
- Bereavement (3 worksheets)

© 2004

Helping the Patient with Advanced Disease: a Workbook
Regnard C. ed.

Oxford: Radcliffe Medical Press www.radcliffe-oxford.com